

嶺南

Lingnan Foundation
Programs and Activities
2008 - 2010



MISSION OF THE LINGNAN FOUNDATION

The Lingnan Foundation, an American philanthropy, seeks to contribute to the advancement of higher education in South China and, in this process, promote understanding between Chinese and Americans. Guided by the example of international collaboration embodied in the legacy of Lingnan University (founded in Guangzhou, China, in 1888), the Lingnan Foundation pursues its mission by supporting scholarly exchange, educational innovation, and service to society.

VISION STATEMENT

The relationship between China and the United States is of profound importance to the world's future. The Lingnan Foundation believes that a cooperative relationship, founded on mutual understanding and respect, will enable our two countries to address common problems and reach shared goals effectively. The Foundation further believes that higher education is a crucial venue for realizing these objectives.

The drive to internationalize tertiary education in both China and the United States will give rise to unprecedented opportunities for collaboration between Chinese and American universities, scholars, and students. Educators in all fields will seek innovative curricular and teaching models and new ways to bring scholars together. Accordingly, they will value the manner in which a liberal learning pedagogy encourages broad understanding and bridges cultural differences, and will look for the means and resources to incorporate liberal learning approaches into their teaching, research, and efforts to enhance engagement with both societies.

HISTORY OF THE LINGNAN FOUNDATION

The Lingnan Foundation, formerly the Trustees of Lingnan University, was first incorporated in the State of New York in 1893 to support the development of a college in Canton (Guangzhou), China, which had begun to offer classes in 1888. This college later became Lingnan University.

After the change of government in China in 1949, the Arts and Sciences faculties of Lingnan were merged with Sun Yat-sen (Zhongshan) University. From 1954 to 1979, the Trustees conducted their work primarily in Hong Kong with several colleges that became the Chinese University of Hong Kong, and later, with the institution that is now Lingnan University, Hong Kong. In 1980, the Trustees resumed their activities in Guangzhou, principally with Sun Yat-sen (Zhongshan) University on the former Lingnan campus and, since 1988, with Sun Yat-sen (Zhongshan's) constituent, Lingnan (University) College.

The Foundation also supports institutions or organizations in the United States or elsewhere that reflect the Lingnan tradition or otherwise share the Foundation's objectives.

More information about the history of the Lingnan Foundation and Lingnan University, including wonderful digitized photographs of the former institution, can be found in our archives housed in the Yale University Divinity School library.

GRANT GUIDELINES AND OBJECTIVES

The Foundation has, at its core, a philosophy of responsive grantmaking. It strives to exemplify and promote relationships of mutual understanding and respect by responding to the priorities of our partner institutions in South China within the framework of shared commitments to the development of higher education. Although its primary work is making grants, the Foundation also seeks to serve as a resource in developing and facilitating contacts within the academic world between China and the United States.

GUIDELINES:

The Lingnan Foundation pursues its Mission through grant-making activities that give special priority to institutions and programs with historic Lingnan affiliations. Specifically:

- * Grants for programs at the following institutions:
- * Lingnan University, Hong Kong, and
- * Sun Yat-sen University (SYSU), notably including its Lingnan (University) College.
- * Collaborative programs between these institutions and U.S. partners; and
- * W.T. Chan Fellowships Program

In general, the Foundation favors programs that serve as catalysts for innovation, and are in relevant areas where funding is unusually difficult to secure.

OBJECTIVES:

In considering grant proposals, the Foundation judges their potential for contributing to the expansion of:

- * Liberal learning*;
- * Service to society; and
- * Institutional advancement and international cooperation.

* The Foundation believes that the hallmarks of a strong liberal learning pedagogy can be found in the classical learning traditions of both China and the west. These include a) a focus on student learning and teaching that promotes the mastery of analysis and expression, b) multidisciplinary and interdisciplinary inquiry, c) the integration of academic work with experience through community service, field study and internships, d) student participation in research and independent study, and e) international perspectives and exchange. A liberal learning approach can be incorporated into all academic disciplines and professional education programs.

THE LINGNAN FOUNDATION'S PARTNER INSTITUTIONS

Lingnan University, Hong Kong is Hong Kong's only liberal arts institution of higher education and was founded through the efforts of Lingnan alumni in 1967. With a student body of approximately 2,500 on a residential campus, the university seeks to emphasize teaching quality and develop students who are well-equipped to adapt in this changing world. Website: www.ln.edu.hk



Sun Yat-sen University (SYSU), Guangzhou is a key comprehensive university in China with over 83,000 students on four campuses. Its main campus is located on the original Lingnan University Hong Lok campus. Website: www.sysu.edu.cn



Lingnan (University) College at Sun Yat-sen University, Guangzhou, was founded in 1988 with the strong support of Lingnan alumni. In drawing on the traditions of the old Lingnan University, L(U)C strives for educational reform and outstanding academic achievement in the fields of economics and business administration. Website: www.lingnan.org



Dear Friends,

We are delighted to present the 2008-10 Lingnan Foundation Program and Activities Biennial Report.

The Foundation's on-going support of liberal learning, service to society; and institutional advancement and international cooperation since 2000 has seen exciting new developments in 2008-2010. Of particular significance in the area of liberal learning, Sun Yat-sen University established the Boya Ban interdisciplinary honors class program, a new campus-wide general education curriculum, and a liberal arts college. SYSU is widely recognized as a leader in China's national effort to reform undergraduate education. In the area of service to society, Lingnan University's Office of Service Learning (OSL) has garnered recognition as a regional leader. In 2007-9, the OSL hosted two international conferences as well as gained official commendation as the recipient of a special HK\$11 million grant from the University Grants Commission (UGC). The commitment and drive to develop in these areas has been remarkable and the potential for deep collaboration with American partners is especially striking. We look forward to working with our partner institutions to further such cooperative work and anticipate that our 2010-2012 report will bring news of related developments.

The W. T. Chan Fellowships Program remains a bright spot. In 2008, the Foundation decided to expand the program from 8 to 12 Fellows. These carefully selected students from Sun Yat-sen University and Lingnan University spend six months in the United States immersed in service learning at UCLA and UC-Berkeley. As one former Fellow noted, "As the new semester begins here, I've met with some of '09 fellows on campus, and learnt from their great experience in California. It's also great to know that more and more students in Zhongda are willing to join W. T. Chan program and a rising number of people feel passionate about community service, too!"

Thank you for taking time to read more about the Foundation's work in 2008-2010.

Sincerely,

Jane S. Permaul



Chair

Leslie Stone



Executive Director



GRANTS PROGRAM

During the 2008-2009 fiscal years (from July 1, 2008 through June 30, 2010), the Foundation disbursed a total of \$1,676,766 in grants, as follows (for continuing programs, some information from the spring of 2008 is also included below):

Sun Yat-sen University (SYSU)

Boya Ban Liberal Learning Class

This honors program gives students on Sun Yat-sen University's East Campus the opportunity to explore interdisciplinary course work and to study outside their major fields. It is intended to promote critical thinking, improve research skills, and community engagement. The Boya Ban has admitted 150 students for each class starting in 2008 and 2009.

Special Earthquake Relief Grant

This special grant was made to help Sun Yat-sen University contribute to the relief efforts for the Szechuan earthquake of 2008. Lingnan Foundation support was used to help administer a post-quake mental health aid in the quake zone as well as assistance to SYSU students directly impacted by the earthquake.

Young Administrative Staff Training

This program identifies administrative staff members for professional training in Hong Kong or abroad. The following administrators were selected for professional training abroad through fiscal year 2009:

Name	Department	Host Institution
Qu Qiongfai	Higher Ed. Research Center	University of California Berkeley
Yu Zhantao	International Cooperation and Exchange	Pitzer College
Zhang Zhe	Alumni Affairs	Bryant University

Young Faculty Development

This program selects young faculty members who study and conduct research abroad for up to a year. The following individuals were selected for advanced study abroad during the fiscal years 2008 and 2009 (as well as a few who were at their host institutions in the spring of 2008):

Name	Subject	Host Institution
Zhang Yang	Informatics	Syracuse University
Guo Bingru	Chinese Literature	Stanford University
Zhuo Hui	English Literature	Cornell University
Wen Qiang	History	University of Denver

Wang Chengzhi	International Law	Temple University
Zhang Yi	Chemistry/Physics	University of Illinois at Urbana-Champaign
Xian Jun	Applied Mathematics	Yale University/University of Central Florida
Li Ying	Management Science	University of Washington
Tan Ankui	Politics	University of Chicago
Zhang Xiaoyu	Communications	Maryland University
Li Hua	Chinese Philosophy	Christianity and China Research Center
Jiao Bo	Law	Vermont Law School
Zheng Yanfang	Comparative Literature	University of Michigan
Wang Jing	Chemistry	University of Wyoming
Zhang Lin	Information Systems	University of Maryland

Liberal Learning Programs

Created and led by Sun Yat-sen University faculty members, these programs seek to fulfill the goals of “liberal learning”. As such, they are interdisciplinary programs geared toward undergraduate students that seek to engage them in primary research, enhance critical and creative thinking, and develop leadership skills. Since 2003, ten programs have been selected for support by a multi-disciplinary committee at SYSU and the Lingnan Foundation. Two of these programs continued into the 2008 and 2009 fiscal years:

Preservation and Practice of Traditional Culture

This 3-year program ended in the summer of 2009 and promoted active involvement in interdisciplinary studies through the vehicles of the Lingnan Poetry Society and the creation of an online Academic Forum of the Chinese Stylistics Institute of Sun Yat-sen University. The Lingnan Poetry Society engaged students in the living practice of traditional poetry, particularly ci poetry with southern intonations. The online forum gave students, and all poetry lovers, a modern community in which to preserve and practice this traditional poetic culture.

Chemistry and Sustainable Development

This three-year program ending in 2010 was designed to strengthen interdisciplinary understanding of chemistry and how it relates to sustainable development. Professor Chen Liuping, Dean of the Chemistry Department, recruited 30 students annually to join the program.

Visiting Researchers

The Foundation sponsored two research scholars from sociology professor Wang Jin’s lab at Sun Yat-sen University who travelled to New Haven to study the environmental impacts of rapid urbanization at Professor Karen Seto’s lab at Yale University.

Sun Yat-sen University, Lingnan (University) College (L(U)C)

General Support: The Foundation continues to support the development of the college. Grant funds are used to invite experts to visit and lecture, recruit teachers from abroad, support faculty and students' advanced study abroad, and their attendance at academic conferences (both international and domestic).

Lingnan Foundation Professorships Program

The program recruits faculty from elsewhere to teach at L(U)C for either a semester or a year.

The following experts served as Lingnan Foundation Professors in 2008-2009:

Spring 2008: Hong Han, School of Economics and Management of Stanford University

Fall 2008: Pan Xia, Macao University of Science and Technology

Spring 2009: Hong Han, School of Economics and Management of Stanford University

Fall 2009: Guo Weiyu, University of Nebraska at Omaha

I. U. Lai Chaired Professorship in Economics

Through the Lingnan (University) Development Fund, Ltd, HK, the Lingnan Foundation supported the creation of a chaired professorship in economics to celebrate the memory of I. U. Lai.

Lingnan University, Hong Kong (LUHK)

The Foundation's has supported the following programs at Lingnan University during fiscal years 2008 and 2009:

Lingnan Visiting Tutors

These tutors are young graduates from abroad who serve as English tutors and live in the residence halls during the academic year in order to promote an English speaking environment. The Foundation has supported 3 tutors from 1999 through 2009.

LUHK English Writer-in-Residence

English Writers-in-Residence enhance the creative and imaginative aspects of Lingnan University's offerings in English language literature and writing. They guest lecture within the English Department and offer campus-wide lectures on creative writing and the writing life. Xu Xi, Hong Kong-born writer of fiction and essays, was in residence from February to May 2008. Justin Hill, Hong Kong based novelist, was in residence from February to April 2010.

Outgoing Exchange Student Need-based Financial Aid program

This program provides support for travel subsidies for the selected students who spend a semester abroad at partner institutions in North America. This program served 20 students in 2009.

Post-graduate Student Conference Travel Scholarships

The Foundation provides this support for Lingnan University post-graduate students to attend international conferences. Each year roughly ten students are able to attend conferences with the help of these scholarships.

Service-Learning Visiting Tutor Scheme

These tutors work with Lingnan University's Office of Service-Learning to promote LUHK's service-learning programs through a tutor-led and student-centered approach. The project recruits two recent college graduates from abroad with service-learning experience. They assist in developing and implementing service-learning programs/courses. The tutors in residence during this reporting period were Corey Reno from the University of California Los Angeles, Stephanie Lee from the University of California Berkeley, Amy Dinh from Stanford University, and Dick Chan from the University of California Los Angeles

Service-Learning Conference at Lingnan University

This conference was supported by a Foundation grant, which helped fund the 2nd Asia-Pacific Regional Conference on Service-Learning Theory and Practice of Service-Learning: Cross-Cultural Service-Learning Programme in Asia-Pacific Region, sponsored by Lingnan University's Office of Service Learning in the summer of 2009. Nearly 250 participants from 15 countries attended the conference.

Service-Learning Summer Programs

These programs give students an opportunity to widen their context for Service-Learning beyond Hong Kong and to explore diverse communities and cultures. More than 250 students participated in projects in Beijing, Taiwan, and the United States in the summers of 2009 and 2010.

Study Abroad Program

This program sends English majors for a summer of study in English programs abroad at Lingnan University's partner institutions and thus fulfilling a requirement of their English degree. Approximately thirty students spent the summer of 2009 at the University of York.

W. T. Chan Fellowships Program

In 2001, the Lingnan Foundation established the Wing-tsit Chan Fellowships Program. In 2008 eight Fellows and in 2009 twelve Fellows were competitively selected from the Foundation's partner institutions to take part in a six month service-learning program in cooperation with the University of California Los Angeles and the University of California Berkeley. The Chan Fellows work as interns in nonprofit organizations within the Los Angeles and San Francisco Bay areas where they seek to make lasting contributions. They live in American homes and attend seminars, cultural events, and weekly group meetings. The Fellowships commemorate the late Professor Wing-tsit Chan, former Dean of the original Lingnan University in Guangzhou and Distinguished Professor of Chinese Philosophy and Religion.

We congratulate the following exceptionally dedicated students on their selection as the 2008 and 2009 W. T. Chan Fellows.

2008 W. T. Chan Fellows and their internships:

Chiang Xirong, Syliva, worked at the City of Los Angeles Mayor's Office (Los Angeles River Project) on revitalizing and remaking the Los Angeles River into public park space by coordinating with city government and more than 300 community-based organizations to support the goals of communities along the river.

Dong Yun, Doreen, worked at Public Counsel, a pro bono law firm where she sought to defend the interests of children in Los Angeles by advancing the goal of a safe, healthy and actively educational environments for all children.

Hung Ka Ho, Billy, worked at Heal the Bay, which seeks to protect the safety and sustainability of seafood and the quality of the water in the Los Angeles area through public information outreach campaigns.

In his internship, **Gao Zhenxian**, Ryan, supported integrated community development in Los Angeles at Local Initiatives Support Corporation, which serves as fiscal agent for non-profit construction and infrastructure development projects.

Yang Gang's, Martin, internship placement was at the Chinese Newcomers Association in San Francisco, where he helped to promote immigrant self-efficacy.

Ou Zhujun's, Jasmine, internship was at the Institute for International Education where she helped to organize delegations of international visitors and plan their learning experiences in the United States.

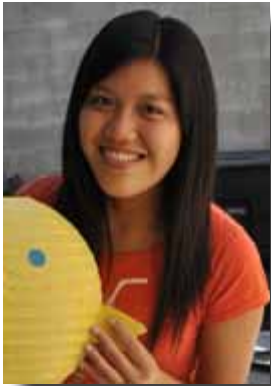


2008 Los Angeles W. T. Chan Fellows

Zheng Dandan, Jessica, interned at Youth Service California, which supports organizations state-wide who involve youth in service-learning and making change in their communities.

Pang Ching Yee, Penny, worked at FORGE assisting refugees in Africa and helping to eliminate poverty in Africa.

2009 W. T. Chan Fellows and their internships:



Chan Chuek Lai, Jenifa, interned with two organizations in Los Angeles: Sierra Club and the Venice Family Clinic. At Sierra Club, she worked on the Water Conservation Ordinance Research Project and the Recycling Ambassador Program with the Zero Waste Committee. At the Venice Family Clinic, she created a database for the Giveaway Books Program and worked on the Latino Leaders Research Project and the Solar Panel Research Project.



Guo Yanping, Irene, interned at the Bay Area Video Coalition, a non profit organization based in San Francisco which inspires social change by enabling the sharing of diverse stories through art, education and technology. She worked specifically for the Next Generation program, which empowers youth from low-income families to express themselves, to document their community life, and to broaden their views of possible career paths.



Chen Rui, Ray, worked at the Venice Family Clinic, whose mission is to provide free and quality health care to people in need. He engaged in projects to create an electronic database of all volunteers, to organize fundraising and networking outreach to Hispanic leaders in L.A, and to analyze the feasibility of the clinic's use of solar power.



Li Junbao, Julian, worked at Asian Pacific Environmental Network (APEN), which seeks to empower low-income Asian Pacific Islander (API) communities to achieve environmental and social justice. He was involved specifically with the Power in Asians Organizing (PAO) project, which works with a pan-Asian immigrant community in Oakland to promote social justice.

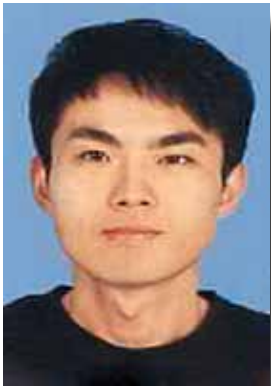


Chen Wenchao, Frances, interned at Institute of International Education in San Francisco. She worked on the International Visitor Leaderships Program, which is designed to increase international understanding and co-operation by hosting international visitors from government, business, education, and the arts. France helped them to obtain firsthand knowledge about the United States, its people, policies, and culture and to establish lasting professional relationships.



Mo Ni interned Oakland Asian Cultural Center (OACC). A thriving community arts organization, the OACC promotes cross-cultural understanding for present and future generations and builds vibrant communities through Asian and Pacific Islander American (APIA) arts and culture programs designed to foster intergenerational and cross-cultural dialogue, cultural identity, collaborations, and social justice.

2009 W. T. Chan Fellows and their internships:



Qin Lei, Kingsley, worked at the Asian Pacific American Legal Center of Southern California (APALC), which advocates for civil rights, provides direct legal services and impact litigation, and builds coalitions among Asian Pacific Americans to create a more equitable and harmonious society. Kingsley supported policy analysis and advocacy in the Policy and Immigrants Right Program as well as researching Asian Pacific American voting patterns.



Wang Teng, Tom, interned at the Coalition for Humane Immigrant Rights of Los Angeles (CHIRLA), which seeks to build coalitions, provide community education and outreach, and organize for policy advocacy. He worked specifically on the Policy & Advocacy Team and the Organizing Team. He sought to bring Chinese communities in the Los Angeles area into the national Reform Immigration for American campaign.



So Lai Ting, Jasmine, worked at the YWCA Santa Monica/Westside, which seeks to empower women and girls by creating opportunities for growth and leadership. She is focusing on a media awareness campaign and fundraising efforts for the YWCA and the Girls In Action program, which is a leadership program for middle school girls.



Wang Xinni worked at the UC Berkeley Art Museum and Pacific Film Archive, which seeks to inspire the imagination and ignite critical dialogue through art and film. She was involved in planning and organizing several Asian art exhibitions with curators and exploring art critique. Xinni was also involved in other aspects of museum management, including fundraising operations, trustees connections, and education programs.



Cui Wenmin, Vic, interned for the Stanford Programs division of VIA, an independent, non-profit, educational exchange organization that provides US-Asia public service and educational exchange opportunities. She helped develop and coordinate short-term, focused, cross-cultural study programs for students of Asia's top universities focusing on specific themes such as health care, poverty and homelessness, or volunteerism.



Xiao Qi, Emily, interned in the Los Angeles city government's Human Relation Commission, which seeks to reduce discrimination and violence and to improve intergroup relations. She worked on the Watts Gang Task Force, the Prevention Intervention and Education Program, and a self-designed media plan for Chinese American community, which sought to promote communication between city government and the Chinese-American community.

W. T. Chan Program Administration

For administering the W. T. Chan Fellowships Program, the Foundation provided grants to UCLA's Bruin Corps and Dashew Center for Office of International Students and Scholars and to the University of California-Berkeley's Cal Corps for Public Service.

W. T. Chan Fellow Selection

The Institute of International Education (IIE)/Hong Kong office manages the recruitment and selection for the W. T. Chan Fellowships.

Cooperative Programs

These programs feature cooperation between the Foundation's partner institutions in China and institutions/organizations in the United States and elsewhere.

Yale-China Association

Yale-China English Teaching Program

The Lingnan Foundation continues to support the Yale-China teaching programs that bring two Yale-China English Teaching Fellows annually to Lingnan (University) College, SYSU and two Fellows to SYSU's School of Humanities. The following Yale graduates were in Guangzhou during the fiscal years of 2008 and 2009: Colin Campbell and Elizabeth Fulton (arriving in 2009), Alexa Verme and Hanna Sufrin (arriving in 2008), and Celia Choy and Peter Friedman (arriving in 2007).

Yale-China Law Program

An earlier Foundation grant to support U.S. law teachers at Sun Yat-sen University's School of Law has been re-imagined as a program to bring SYSU law doctorate students to the U.S. to study and practice public interest law.

China Education Initiative

A Foundation grant was used to support four Teaching Fellows from Sun Yat-sen University. China Education Initiative sends teams of four recent university graduates, in pairs of one Chinese graduate and one U.S. graduate, to teach in underserved rural schools in Yunnan.

Guangzhou English Training Center for the Handicapped

Foundation support was used to send a student from the Guangzhou English Training Center for the Handicapped (GETCH) to the

Asia U.S. Service-Learning program hosted by Stanford University in the summers of 2009 and 2010 as well as to help GETCH students travel to service internships and the 2nd Asia-Pacific Regional Conference on Service-Learning.

Hong Kong America Center

Foundation support helped run a student leadership conference in which 125 students from Guangzhou, Hong Kong, and Macau considered the role of civil advocacy in addressing the impact of environmental degradation on health in the Pearl River Delta.

University of Albany, SUNY

Foundation support was used to run two conferences, one in Guangzhou in January 2009 and one in Albany, New York in May 2010. The conferences' goals were to foster research collaborations between doctoral students and faculty at Sun Yat-sen University and scholars from the Urban China Research Network as well as to provide all scholars the opportunities to utilize cutting-edge urban theories and methodologies in field research conducted in China and the U.S.



2008 W. T. Chan Fellowship Retreat

BOARD OF TRUSTEES 2008-2009

Jane S. Permaul, Chair (from May 2009)
Assistant Vice Chancellor Emeritus, Student
 Affairs and *Adjunct Professor*, Education
 University of California, Los Angeles
 Los Angeles, CA



Chi-Chao Chan
Head, Immunopathology Section and *Chief*
 Histology Core, National Eye Institute at the
 National Institute of Health
 Bethesda, MD

Shirley L. Mow, Chair (until May 2009)
Educational Consultant
 New York, NY



Frederic C. Chang
Associate Dean of Graduate Medical
 Education and *Emeritus Professor of Surgery*
 University of Kansas School of Medicine
 Wichita, KS

Alexander Banker, Treasurer
Director of Investments, Yale University
 New Haven, CT



Edward C. Chow
Senior Fellow, Energy Program, Center for
 Strategic & International Studies
 International Business Consultants
 Leesburg, VA

Ralph E. Lerner, Secretary
Partner, Withers, Bergman, LLP
 New York, NY



Bobby Fong
President, Butler University
 Indianapolis, IN

Shenyu Belsky
Program Director, Southern China
 Rockefeller Brothers Fund
 New York, NY and Guangzhou, China



Larry Hudspeth
Assistant Dean of Finance, UCLA School of
 the Arts and Architecture
 Los Angeles, CA

Kenyon Chan
Chancellor, University of Washington Bothell
 Bothell, WA



Elizabeth D. Knup
Chief Representative, Pearson China and
President, Pearson Education China
 Beijing, China

Helena Kolenda
Program Director for Asia, The Henry Luce
Foundation, Inc.
New York, NY



Roy C. Sheldon
Faculty, The Hackley School and *Principal*
China Business Associates
Ridgewood, NJ

Michael O. Magdol (until May 2008)
Vice Chairman, Fiduciary Trust Company
International
New York, NY



Michael Woo
Dean, Cal Poly Pomona, College of
Environmental Design
Los Angeles, CA

Douglas P. Murray
President Emeritus, Lingnan Foundation
New York, NY



Honorary Trustee:
Tung Au
Professor Emeritus, Carnegie Mellon
University
Walnut Creek, CA

Edward J.M. Rhoads
Professor Emeritus, University of Texas/
Austin
Bronxville, NY



STAFF

Leslie B. Stone
Executive Director



William Barnett
Grants and Program Officer

How to apply for Lingnan Foundation funding:

There are no application forms for proposals to the Lingnan Foundation. Project possibilities are usually discussed informally with a staff member before a submission is made. Grant decisions are generally made in November with a September 15 deadline for submissions, but please inquire directly about submission timing.

Proposals are accepted only from non-profit educational institutions; grants are not made to individuals.

CONTRIBUTORS

We are grateful to the following individuals for their support:

Edward Rhoads
Joseph Lai

Interested friends can help by making a gift to the Lingnan Foundation. Gifts are accepted in accordance with the Lingnan Foundation gift policy, which is available upon request. Gifts, pledges, or letters of intent may be conveyed to:

Lingnan Foundation
442 Temple Street
New Haven, CT 06520-8223

PHONE: 203 432-1063
FAX: 203 432 7246
E-MAIL: Lingnan@yale.edu
WEB: www.lingnanfoundation.org

Gifts, pledges, and donations of appreciated property with ascertainable market value are welcome, as are naming or memorial gifts (subject to the Trustees' acceptance). Information on gifts by charitable testament or trust is available on request.

Lingnan Foundation is a U.S. charitable (501(c)3) corporation. Copies of our audited financial statements prepared by Pallman & Company are available on request.



Lingnan Foundation

442 Temple Street
P.O. Box 208223
New Haven, CT 06520

phone 203 432-1063 fax 203 432-7246

e mail lingnan@yale.edu
web <http://www.lingnanfoundation.org>

