

# 嶺南



## Lingnan Foundation

PROGRAM AND ACTIVITIES 2004-2005



## Board of Trustees 2004 - 2005

### CHAIR, 2004-5

Jane S. Permaul  
*Assistant Vice Chancellor  
Emeritus, Student Affairs  
and Adjunct Professor, Education  
University of California  
Los Angeles, CA*

### ELECTED CHAIR, 2005-6

Shirley L. Mow  
*Educational Consultant  
New York, NY*

### TREASURER

Alexander Banker  
*Director of Investments  
Yale University  
New Haven, CT*

### Lo-Yi Chan

*Architect and Campus Planner  
formerly of Prentice & Chan,  
Ohlhausen  
New York, NY*

### Frederic C. Chang

*Associate Dean  
of Graduate Medical Education  
and Emeritus Professor of Surgery  
University of Kansas  
School of Medicine  
Wichita, KS*

### Edward C. Chow

*International Business Consultant  
Leesburg, VA*

### Jerome B. Grier

*Professor of History, Retired  
Brown University  
Barrington, RI*

### Elizabeth D. Knup

*Managing Director  
and Chief Representative  
Kamsky Associates, Inc.  
Beijing, China*

### Helena Kolenda

*Program Officer for Asia  
The Henry Luce Foundation  
New York, NY*

### SECRETARY

Ralph E. Lerner  
*Partner, Sidley & Austin  
New York, NY*

### Karl K.B. Lo

*Librarian Emeritus  
University of California, San Diego  
Escondido, CA*

### Michael O. Magdol

*Vice Chairman  
Fiduciary Trust Company  
International  
New York, NY*

### Kathryn J. Mohrman

*Executive Director  
Hopkins-Nanjing Center  
Washington Office  
Washington, DC*

### Douglas P. Murray

*President Emeritus  
Lingnan Foundation  
New York, NY*

### Edward J.M. Rhoads

*Professor of History, Retired  
University of Texas  
Geneva, NY*

### Stuyvesant Wainwright III

*President  
Wainwright Asset Management  
East Hampton, NY*

### HONORARY TRUSTEE

### Tung Au

*Professor Emeritus  
Carnegie Mellon University  
Walnut Creek, CA*

### STAFF

### Leslie B. Stone

*Executive Director*

### Ivy Su

*Grants Manager*



**On the cover:** Temple of the Souls Retreat, Hangzhou. Photo by Heather Sancomb.

# Message from the Chair and Executive Director

*September 1, 2005*

Dear Friends,

We are delighted to present the 2004–5 Lingnan Foundation Program and Activities Report.

As in recent years, the Foundation focused its work on supporting programs designed to prepare students for their future role as global citizens in this internationalizing world. Several stand out as particularly innovative and noteworthy. At Lingnan (U) College, students will partner with Bryant University students to jointly examine corporate social responsibility among multinational corporations through first-hand research. American Studies faculty from The University of Hong Kong and Sun Yat-sen University taught interdisciplinary courses that challenged students to examine common attitudes towards the United States. At Lingnan University in Hong Kong, programs geared toward internationalizing the campus sought to assist the University in sending its undergraduates abroad in significant numbers (now 21%) before graduation.

Meanwhile, it was a year of transition at the Lingnan Foundation. After five years of dedicated service, Dr. Jane Szutu Permaul stepped down from the position of Chair in May. We are grateful for her energy and commitment, and are especially pleased that she will continue to serve as a Trustee. Dr. Shirley Lau Mow was elected to serve as our new Chair. Dr. Mow brings a background in the area of higher education as well as personal understanding of Lingnan's educational goals. (Her father attended Lingnan's middle school, and was a member of the class of 1933 at Lingnan University.)

As we reflect on the past year, we hope that the Foundation's contributions will foster even greater accomplishments over time. Inspired by a strong legacy of international cooperation, we have seen what rewards are possible through shared commitments. For this reason, we welcome your ideas and involvement as we continue our work in higher education in South China.

Sincerely,

Shirley L. Mow  
*Chair*

Leslie Stone  
*Executive Director*



*From left are Lingnan Foundation's newly elected Chair Shirley Mow, Grants Manager Ivy Su, and Executive Director Leslie Stone.*

## 2004-05 董事會成員名單

司徒晶	2004-05年度基金會主席 加州大學洛杉磯分校學生事務副校長及教育學教授(退休)
劉瓊鳳	2005-06年度基金會主席 教育顧問
錢艾黎	財 政 耶魯大學投資經理
陳璋源	<b>Prentice &amp; Chan</b> 公司建築師及校園設計師（退休）
曾仲華	堪薩斯大學醫學院外科學教授（退休）
周哲予	國際商業顧問
葛傑瑞	布朗大學歷史學教授（退休）
高倩倩	開有限公司董事總經理及首席代表
葛海倫	<b>Henry Luce</b> 基金會亞洲項目主任
樂瑞福	秘 書 美國盛德國際律師事務所合夥人
盧國邦	加州大學聖地亞哥分校國際研究圖書館館長（退休）
馬歌德	<b>Fiduciary Trust</b> 國際信托公司副主席
莫玉林	中美中心華盛頓辦公室首席執行官
牟 銳	嶺南基金會前總裁
路康樂	德克薩斯大學歷史學教授（退休）
萬銳特	萬銳特資產管理公司總裁
區 東	榮譽董事 卡內基梅隆大學化學教授（退休）
工作人員	
石 蕾	會 長
蘇兆聲	基金經理

## 嶺南基金會董事會主席、會長的話

親愛的朋友們：

我們非常高興藉此機會附上嶺南基金會2004-05年報向各位報告在過去一年中基金會所獎助的項目和其他有關活動。希望大家不吝指教。

在過去一年中，基金會的工作依舊是著重支持培育學子成為世界公民的項目和創新項目：例如贊助廣州中山大學嶺南（大學）學院與美國羅得島州的布萊恩特大學合作，共同考察研究跨國企業的社會責任；我們也資助了中山大學和香港大學美國文化教研部系講授跨學科課題，鼓勵學生們探討研究社會上對美國的觀感態度；在香港嶺南大學，基金會又資助了該校促使校園國際化的項目。希望能大量（目前為21%）選送本科生在畢業前到國外學習一段時期。

去年也是基金會一個交替的年度，司徒晶博士在五年主席任期完滿後卸任。我們衷心感謝她在主席任期內的辛勤工作與巨大貢獻。並為她願意撥冗繼續留任董事而感到欣幸。劉瓊鳳博士被選為現任主席。劉博士在高等教育領域中卓越學養和她對嶺南教育宗旨的深刻認識將會大大充實基金會的工作。（劉博士的父親曾就讀嶺南中學，是原嶺南大學1933屆校友。）

回顧過去一年，我們一方面期望基金會的工作能與時俱進，同時也體會到一向深深得益於國際合作的傳統，因此，我們在此懇求您的策勵與合作，讓我們共同為促進中國南方高等教育工作而努力。

主席 劉瓊鳳  
會長 石蕾 謹上  
2005年9月1日

## Introduction



*Vermont Law School student Heather Jarvis with her SYSU partner Wei Xu, the first participants of a environmental clinic student exchange involving students in collaborative projects. Together, the two law students produced a comparative analysis of air pollution trading in the United States and China, and shared their findings with faculty and students at SYSU.*

The Lingnan Foundation, formerly the Trustees of Lingnan University, was incorporated in the State of New York in 1893 to support the development of a college in Guangzhou, China, which later became Lingnan University. In 1927, when local Chinese took charge of Lingnan University, the Trustees of Lingnan University restructured and supported the institution through years of war when the campus moved several times. After the change of government in China in 1949, the Arts and Sciences faculties of Lingnan were merged with Zhongshan University, on the former Lingnan campus. From 1954 to 1979, the Trustees conducted their work primarily in Hong Kong with several colleges that became The Chinese University of Hong Kong and, later, with the institution that is now Lingnan University.

The Lingnan Foundation's mission is to contribute to the advancement of higher education in the historic Lingnan region of South China, including Hong Kong and Macao.

The Foundation's goals are to encourage:

- Academic excellence, intellectual openness and service to society.
- Cooperation and scholarly exchange of information and ideas between Chinese and Americans.

Since the 1980s, the Foundation has primarily supported programs at Sun Yat-sen (Zhongshan) University, its constituent Lingnan (University) College, and Lingnan University in Hong Kong. In recent years, the Foundation has sought to fulfill this mission by supporting programs that advance broad learning and service to society at its partner institutions.

## The Lingnan Foundation's Partner Institutions

**Lingnan University, Hong Kong** is Hong Kong's only liberal arts institution and was founded through the efforts of Lingnan alumni in 1967. With a student body of over 2,000 on a residential campus, the university seeks to emphasize teaching quality and develop students who are well-equipped to adapt in this changing world. **Website: [www.ln.edu.hk](http://www.ln.edu.hk)**

**Lingnan (University) College at Sun Yat-sen University, Guangzhou** is a college within Sun Yat-sen University that was founded in 1988 with the strong support of Lingnan alumni. In drawing on the traditions of the old Lingnan University, L(U)C strives for educational reform and outstanding academic achievement in the fields of economics and business administration. **Website: [www.lingnan.org](http://www.lingnan.org)**

**Sun Yat-sen University (SYSU), Guangzhou** is a key comprehensive university in China with over 40,000 students on four campuses. Its main campus is located at the original Lingnan University Hong Lok campus. **Website: [www.zsu.edu.cn](http://www.zsu.edu.cn)**



*The Three Gorges Fieldwork Investigation Program participants and faculty took their official group photograph in Lianziya in the Three Gorges region.*

## 簡 介

嶺南基金會，啟軀於十九世紀末葉。原為1893年在美國紐約州立案的董事會，創辦並管理座落在中國廣州的格致書院（英文原名為Christian College in China）。經過一段發展後，格致書院更名為嶺南大學。1927年嶺南大學由華人接辦。抗日戰爭期間，嶺南大學歷盡艱辛，校址數遷。董事會在遠水近火情況下，也曾聯合美國有心團體人仕，盡力對嶺南大學做杯水車薪的輪助。解放後，董事會停止了在廣州活動。1952年嶺南大學的工、農、醫、商、文理等院系分別併入中山大學或其他院校。1954年董事會工作開始面向香港的幾所與董事會有歷史淵源的大專院校，也就是現在的香港中文大學和嶺南大學。1980年，董事會開始資助在廣州的中山大學並在1988年，延伸資助至中大屬下的嶺南（大學）學院。1985年董事會更名為基金會。

嶺南基金會的宗旨是為發展中國歷史上的嶺南地區（包括香港和澳門）的高等教育作出貢獻。

基金會的目標是：

- 1、促進優質教育、學術開放和服務社會；
- 2、鼓勵中美之間學術信息與學術思想的交流與合作。

自1980年以來，基金會主要資助中山大學，中山大學下屬嶺南學院和香港的嶺南大學。近年來，基金會支持了這些夥伴院校開展的廣泛學習與服務社會項目。

## 嶺南基金會的夥伴院校

**香港嶺南大學：**香港嶺南大學於1967年由嶺南大學校友籌建，是香港唯一一所博雅教育大學。香港嶺大採取住宿制，擁有學生2,000餘名。大學重視教學質量，旨在培養學生在迅速變化的環境中的適應能力。學校的網址是[www.ln.edu.hk](http://www.ln.edu.hk)。

**中山大學嶺南（大學）學院：**中山大学嶺南（大學）學院於1988年在嶺南校友的幫助下建立於中山大學校園內。嶺南（大學）學院繼承原嶺南大學的傳統，致力於教學改革與優質教育。嶺南（大學）學院在大陸的經濟與工商管理教育方面名列前茅。學校網址是[www.lingnan.org](http://www.lingnan.org)。

**中山大學：**中山大學是大陸一所綜合性國家重點大學，擁有四萬餘名學生，主校園坐落於原嶺南大學康樂園內。學校網址是[www.zsu.edu.cn](http://www.zsu.edu.cn)。



*Sun Yat-sen University students examining cretaceous sediment as a part of a 2005 summer fieldwork program on “Environmental and Social Changes in the Three Gorges Region of the Yangzi River”. The program is funded through the Liberal Learning Program at Sun Yat-sen University.*

## Grants program



Lingnan University 2004-5 Student International Exchange Programme participants gather after their orientation for an official photograph with President Edward Chen and Associate Vice President Barton Starr.

During the 2004–2005 fiscal year, the Foundation disbursed a total of \$886,068 in grants, as follows:

***Intercultural learning and exchange:***  
*International exchange for expanding minds, developing future leaders, and sustaining academic excellence.*

**Teachers from Abroad.** At Lingnan (University) College, Professor Wu Lifan of California State University served as a 2004–5 Lingnan Foundation Professor. Ten foreign experts visited the campus to deliver lectures and strengthen existing exchanges.

**International Student Exchange.** The Foundation provided partial support for International Student Exchange Scholarships at Lingnan (University) College that were awarded to eight students who studied at international partner institutions for a semester or year.

**American Tutors in Hong Kong.** The Lingnan Visiting Tutors (LVTs) program at Lingnan University selects young graduates of liberal arts colleges who serve as English language tutors and live in the residence halls. Foundation funds have supported three Tutors annually since 1999.

**Teaching Scholars in Hong Kong.** The Lingnan Foundation Teaching Scholar (LiFTs) program

brings an international PhD to Lingnan University to teach in areas of strategic importance to the University. Professor Pei Pei Koay of Virginia Polytechnic Institute was the 2004–5 LiFTS Scholar, offering classes in science and technology studies.

**Summer Study Abroad.** The Foundation provided partial support to Lingnan University/HK for its Contemporary English Studies Summer Abroad Programme at York University in Great Britain and Summer Study at Beloit College in Wisconsin, two programs meeting the University's requirement that all English majors spend at least a summer in an English-speaking setting abroad.

**Academic Study Abroad.** The Foundation provided partial travel subsidies for approximately 20 students selected to participate in the Student International Exchange Program (SIEP) at Lingnan University. These students spend a semester abroad at partner exchange institutions.

**Foreign Teachers in Small Class Settings.** The Foundation supported three Yale-China Association English Language Instructors at Sun Yat-sen University in 2004–05. Luke Habberstad and Diana Lin taught undergraduate students at SYSU's Lingnan (University) College and Seiji Shirane taught postgraduate students at Sun Yat-sen University's School of Humanities.

**Faculty Research Abroad.** The Faculty Development Fund at SYSU brings selected younger faculty members to the United States and elsewhere for advanced study or to attend international conferences.

*Faculty selected for advanced study abroad in 2004–05*

<i>Name</i>	<i>Department</i>	<i>Host institution</i>
Xiaoyun Han	School of Management	Cornell University
Zhiwen Zhang	School of Government	University of California, Berkeley
Dingguo Gao	School of Education	University of Massachusetts
Xiaolong Jiang	Math & Computer Science	University of Southern California
Houjin Li	Chemical Engineering	n/a
Qinfen Zhang	Life Science	n/a
Jiangtao Ren	Information Technology	Carnegie Mellon University
Pengpeng Feng	College English Center	Univ. of Michigan

*Faculty selected to attend international conferences in 2004–05*

<i>Name</i>	<i>Department</i>	<i>Conference</i>
Hanji Li	Political Science	Chinese Despotism and Exile Experience
Renhong Zhu	Business Admin	The Academy of Management 2005
Daoqing Dai	Mathematics	5th International ISAAC Congress
Yongjin Li	Mathematics	2nd International Conference – Applied Mathematics
Hongmei Liu	Information Tech.	2005 IEEE International Symposium on Circuits and Systems
Suhong Zhou	Human Geography	45th Congress of the European Regional Science Association
Ruowen Fu	Chemical Engineering	International Conference CESEP '05

**Professional Training Abroad.** The Staff Training Program at SYSU offers opportunities for selected mid-level staff members to visit counterparts in Hong, or study in the U.S. or elsewhere.

The following five middle level administrative staff were selected to visit institutions in Hong Kong for 2 months.

<i>Name</i>	<i>Department</i>
Jianchao Li	Personnel
Minghe Lin	Lab Management
Xiangzhi Li	General Administration
Jinhua Chen	Continuing Education
Lude Wang	Campus Security

In addition, Xia Dan of the Student Affairs Office spent six months at California State University–Fullerton examining the delivery of health services.

**Teaching Excellence:** Lingnan (University) College organized a forum for young faculty on teaching quality. Professor William Li of the Carlson School of Management, University of Minnesota, served as the forum's leader in 2004–5.

## 資助項目



*Yale China Association English Language Instructor, Luke Habberstad, teaches spoken English at Lingnan (University) College at Sun Yat-sen University.*

在2004-05財政年度，基金會共支出886,068美元獎助下列博雅教育和服務社會的項目：

### 國際交流：國際交流對開闊視野，培養未來的領袖人才和追求學術優異有重要作用

**海外教授：**基金會資助嶺南（大學）學院邀請海外的教授與專家教授國際化的高級課程。來自加州州立大學洛杉磯分校的吳立范教授是2004-05的海外教授。學校還邀請了十餘名學者與專家進行講座。

**國際交換學生：**基金會資助嶺南（大學）學院的國際交換學生計劃。該計劃每年為八名學生提供部分獎學金到海外夥伴學校學習一年或一學期。

**美國英語教員在香港（LVTs）：**剛畢業的美國學生到香港嶺南大學教授英語。他們住在學生宿舍從而營造學習英語的氛圍。1999年以來，基金會共資助了三名嶺南訪問教員。

**教育學者在香港：**嶺南基金會教育學者項目（LiFTS）每年選拔優秀的海外博士畢業生到香港嶺南大學教書一年。畢業於弗吉尼亞理工大學的Pei Pei Koay教授是2004-05年的教員。

**暑期海外學習：**基金會部分資助英語專業的學生到英國的約克大學或美國威斯康星州的Beloit College學習。這一項目滿足了嶺南大學英語專業的學生必須在英語國家學習一暑期的要求。

**海外學習：**基金會每年為香港嶺南大學的二十餘名學生提供旅行津貼，資助他們到海外的夥伴學校學習一學期。

**小班英語教學：**2004-05年，基金會資助了三名雅禮協會的英語教員。Luke Habberstad和Dianan Lin在嶺南（大學）學院教本科生英語。Seiji Shirane為中山大學文科研究生教英語。

**教師海外進修：**嶺南基金會於1998年在中山大學設立了“中青年教師培訓項目”。該項目選拔優秀的中青年教師到美國或其他國家進修半年或參加國際會議。

#### 2004-05年度中山大學中青年教師培訓名單

姓名	系別	訪問院校/機構
韓曉雲	管理學院	康奈爾大學
張志文	政務學院	加州大學伯克利分校
高定國	教育學院	馬薩諸塞大學
姜曉龍	數計學院	南加州大學
李厚金	化工學院	未定
張勤奮	生科院	未定
任江濤	信科學院	卡乃爾-梅隆大學
馮芃芃	大學外語教學中心	未定

#### 2004-05年度中山大學國際會議資助名單

姓名	系別	會議名稱
黎漢基	政治學	“中國人的遷移與流亡經驗”
朱仁宏	企業管理	2005年國際管理學會年會
戴道清	數學	第五屆ISAAC大會
黎永錦	數學	第二屆應用數學國際會議
劉紅梅	信息學	2005年IEEE電路與系統國際年會
周素紅	人文地理	2005年歐洲區域科學協會（ERSA）年會
符若文	化工學院	CESEP'05 儲能和環境保護用碳材料國際會議暨第二屆中法新型碳材料學術研討會

**行政人員培訓：**嶺南基金會在中山大學為中層管理人員設立了“行政人員培訓項目”。受資助的中層管理人員到香港或海外大學的相應的單位進行為期兩個半月或半年的培訓。

#### 2004-05年度中山大學管理人員培訓資助名單

姓名	系別	訪問院校/機構
李建超	人事處	香港浸會大學
林明河	設備與實驗管理處	未定
李祥之	總務處	未定
陳金華	成人教育管理處	美國
王泉德	監察處	臺灣

中山大學校長辦公室的夏丹到加州州立大學富樂頓分校訪問學習。她選修了各種課程，在學生事務辦公室工作，對健康教育進行了專門研究，對美國大學在行政管理方面表現出的總體的人文性、辦事的效率性、有序性、工作的自主性和全員的積極性方面有一些感性認識。

**優質教學：**嶺南（大學）學院為青年教師組織會議探討教學中共同存在的問題。明尼蘇達大學卡爾森管理學院的William Li教授是這次會議的組織者。

### ***Experiential Learning:***

#### *Engaging students in primary research*

**Investigating Urban Social Welfare Policy.** Through a Foundation grant to SYSU, Prof. He Yanling of the School of Government will involve students in field research so they will become more familiar with disadvantaged groups near the university.

**Local Entrepreneurship.** To teach students about the role and significance of local enterprises in Guangdong and beyond, the School of Engineering at SYSU will organize field trips, surveys and student workshops under the auspices of the Small and Medium Enterprises Service Center.

**Understanding Religion.** Prof. Ping Xiao of the School of Foreign Languages will engage students in a comparative study of Buddhism, Taoism and Christianity by offering a university-wide course and organizing field study over three summers.

**Investigation of Rural China.** The Foundation provided a supplemental grant to support the participation of two Lingnan University undergraduates in SYSU's History and Anthropology summer fieldwork program that explores the social and cultural transformation of rural China.

### ***Interdisciplinary Inquiry:***

#### *Making connections among different academic disciplines*

**Business Ethics and Sustainable Development.** Lingnan (University) College and Bryant University (Rhode Island) have co-designed a student exchange program whereby business and humanities undergraduate majors of both institutions will jointly evaluate the environmental impact and ethical behavior of multi-national companies in New England and Guangzhou.

**Re-Examining America.** Faculty from The University of Hong Kong (HKU) worked together with SYSU faculty to bring new interdisciplinary classes and innovative teaching methodologies to SYSU. In 2004–5, four courses were offered: Asia on America's Screen, Asian American Culture, In/Visible Histories, Urban History and the Culture of New York City. The program will continue in 2005–6.

**Urbanism in the Pearl River Delta (PRD).** The Hong Kong-America Center (HKAC) organized a three-day student leadership conference jointly with SYSU's School of Geography and Urban Planning in mid-July. Over 70 students from Hong Kong, Macau, Guangdong, and the United States gathered to assess urban development in the PRD.



**Education for service:** *Involvement in community service is an ideal way to cultivate civic responsibility. The founding motto of Lingnan was “Education for Service.”*

**Community Service in Hong Kong.** The Institute of International Education/Hong Kong, in partnership with Lingnan University's Asia-Pacific Institute of Aging Studies, co-administered the 2005 Hong Kong Summer Service Program. The program involves selected university students from both Guangzhou and Hong Kong in social service work by arranging Hong Kong-based internships and workshops.

**2005 Summer Service Fellows and their placements**

**Yuen Lok Ling, Circle,** Lingnan University  
**Liang Jiayi, Connie,** Lingnan (University) College, SYSU  
*The Salvation Army Hong Kong and Macau*

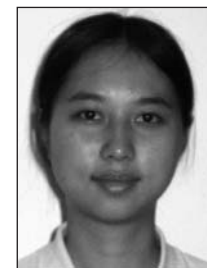
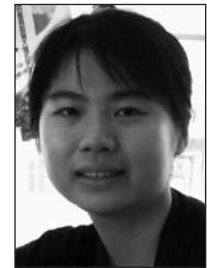
**Wang Hui,** Lingnan (University) College, Sun Yat-sen University  
**Deng Minling, Milly,** Sun Yat-sen University  
*Fu Tai Neighborhood Elderly Centre*

**Zhao Lu,** Sun Yat-sen University  
**Wong Wing Yu, Esther,** Lingnan University,  
*Tung Wah Group of Hospitals*

**Service Learning Conference Attendance.** The Foundation provided funds to support attendance by Lingnan University representatives at the International Partnership for Service Learning and Leadership (IPSL) 2005 Annual Conference in South Dakota, USA.

**Training Workshops on Non-Profit Leadership.** A supplemental grant to the Institute of International Education supported an additional day and a half of workshops on leadership of non-profit organizations. The program targeted SYSU students and was led by non-profit leaders from mainland China, Hong Kong and Taiwan.

*Above: Yuen Lok Ling (Circle) of Lingnan University, a participant of the 2005 Hong Kong Summer Service Program, arranged arts workshops for children at the Salvation Army Hong Kong and Macau.*



**2005 Summer Service Fellows.** *Top row: Yuen Lok Ling (Circle), Liang Jiayi (Connie); middle row: Wang Hui (Kate), Deng Minling (Milly); bottom row: Zhao Lu (Lulu), Wong Wing Yu (Esther).*



*Lingnan (University) College's Vice President, Xu Luodan, visited the Lingnan Foundation and Yale University during the spring of 2005. She delivered a talk on foreign direct investment in Guangdong Province at Yale's School of Management while in New Haven, Conn.*

### 從實踐中學習：通過田野考察，學生對重要社會問題有所了解

經中山大學博雅教育委員會推薦，基金會資助了以下三個博雅教育項目：

**走進鄰里、走進城市邊緣群體：**中山大學政治與公共事務管理學院的何艷玲講師組織學生到城市的弱勢群體中進行社會調查，並將結果呈政府有關部門。本項目旨在進行公民教育和促進公眾參與政府決策過程。

**中小企業交流服務中心：**中山大學工學院的余志教授組建中小企業交流服務中心，目的是為在校大學生與中小企業間提供一個相互了解、相互交流的社會平臺，探索高等教育第二課堂實踐活動的教學模式。

**宗教的多元認識與實踐：**中山大學外語學院的肖平教授提出了這個項目。該項目面向全校開設宗教概論課程，包括基督教知識，佛教知識，道教知識和宗教人類學與宗教社會學等；組織學生參觀基督教、佛教和道教機構；組織宗教實踐夏令營。該項目的目的在於增強當代大學生對宗教的認識和理解，加深對宗教與文化多元性的理解。

**中國鄉村社會變遷：**基金會額外資助了兩名來自香港嶺南大學的本科生參與中山大學歷史人類學研究中心主辦的這一項目。

### 多學科探尋：不同學科之間的探尋可以發展人們的智力並培養更寬廣的理解力

**商業道德與可持續性發展：**廣州嶺南（大學）學院與羅德島的布萊恩特大學共同設計了這個項目。該項目組織文科專業的學生與商科專業的學生到廣州與新英格蘭地區的跨國企業考察。通過實踐了解跨國企業存在的環境問題與社會責任問題。每年有30名來自以上兩所院校的學生參與這一活動。

**重新審視美國：**中山大學與香港大學合作在中大開設了一系列跨學科的課程。2004-05年開設的課程包括：“美國銀屏上的亞洲人”，“亞裔美國人文化”，“看得見的歷史”和“紐

約的城市歷史與文化”。這些課程引導學生重新審視對美國的印象同時加強了學生的英語能力。

**珠江三角洲的城市化問題：**總部設於香港的港美中心與中山大學地質與城市規劃學院共同組織了為期三天的學生領袖會議，探討珠江三角洲的發展問題。來自香港、澳門、廣州和美國的七十二名學生參加了這一會議。來自中山大學與香港嶺南大學的學生頗眾。

**教務為服務：社區服務是培養公民社會責任感的最佳途徑，原嶺南大學的校訓是教育為服務。**

**香港的社區服務：**國際教育協會與香港嶺南大學的亞太老年學研究中心共同組織2005年香港暑期服務項目。項目選拔廣州和香港兩地的學生到香港的社區機構中實習服務。

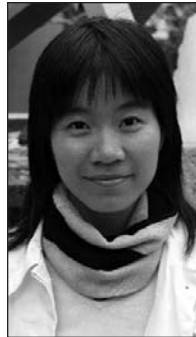
2005年香港暑期服務的學生和他們的服務機構如下：

香港嶺南大學	黃穎瑜	東華三院戴東培社會服務大樓日間護理中心
	阮絡伶	救世軍港澳軍區竹園青少年中心
嶺南（大學）學院	梁嘉怡	救世軍港澳軍區屯門東青少年綜合服務中心
	王 卉	鄰舍輔導會富泰鄰里康齡中心
中山大學	鄧敏玲	鄰舍輔導會富泰鄰里康齡中心
	趙 璐	東華三院戴東培社會服務大樓日間護理中心

**國際服務學習會議：**基金會資助香港嶺南大學參加在美國Dakota舉行的2005服務學習和領袖國際夥伴年會。

## Wing-tsit Chan Fellowships Program

### ***W.T. Chan Fellows at UC Berkeley and their internship sites:***



CLOCKWISE FROM TOP LEFT

#### **Li Jun**

Lingnan (University)  
College, SYSU

*Unfortunately, Li Jun  
was not able to participate  
in the program.*

#### **Lui Sau Yee (Lydia)**

Lingnan University  
Lawrence Hall of Science

#### **Wu Dongni (Grace)**

Sun Yat-sen University,  
East Bay Community Law Center

#### **Weng Jinghua (Jessie)**

Sun Yat-sen University,  
Housing Rights Inc.

In 2001, the Lingnan Foundation established the Wing-tsit Chan Fellowships Program. Annually, six to eight Fellows are competitively selected from the Foundation's partner institutions to take part in a five-month service-learning program in cooperation with the University of California, Los Angeles and Berkeley campuses. The Chan Fellows work as interns in nonprofit organizations within the Los Angeles and San Francisco Bay areas where they seek to make lasting contributions. They live in American homes and attend seminars, cultural events, and monthly group meetings. The Fellowships commemorate Prof. Wing-tsit Chan, former Dean of the original Lingnan University in Guangzhou, and Distinguished Professor of Chinese Philosophy and Religion.

For administering the W.T. Chan Fellowships Program for two years (2005 and 2006), the Foundation provided grants to UCLA's Bruincorps and Office of International Students and Scholars and to the University of California-Berkeley's Cal Corps for Public Service.

The Institute of International Education/Hong Kong administered the selection competition for the W.T. Chan Fellowships Program in 2005.

In this fifth year of the program, we congratulate these exceptionally dedicated students on their selection as the 2005 W.T. Chan Fellows.



*In March 2005, past and present W.T. Chan Fellows gathered for a reunion dinner.*

## 陳氏學者獎學金

2001年，嶺南基金會設立陳氏學者獎學金。該項目每年從基金會資助的高校中選拔六到八名學生參加由加州大學柏克利分校和加州大學洛杉磯分校組織的為期五個半月的學習與實習。按照自己的興趣，學生們被安置在洛杉磯和舊金山附近的非營利機構中實習。學生們住在美國家庭中，到上述兩校選修有關課程，參加文化活動和每月的小組會議。這個項目是為了紀念陳榮捷教授。陳教授是中國著名的哲學與宗教學專家，曾擔任前嶺南大學的教導主任。

基金會為加州大學柏克利分校的Cal Corps和加州大學洛杉磯分校的Bruincorps提供資金，由這兩所機構全面負責陳氏學者的管理工作。

陳氏學者項目重現了前嶺南大學“教育為服務”的校訓。以下同學經過熱烈的角逐脫穎當選為2005年陳氏學者：

加州大學洛杉磯分校基地：

姓名	實習機構
何 旻	Watts Labor and Community Action Center
歐麗穎	ArtsCorps
陳 穎	Youth Opportunity Movement, Watts
王穎欣	Center for Law in the Public Interest

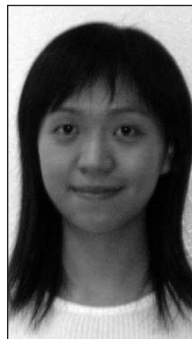
加州大學柏克利分校基地：

姓名	實習機構
李 俊	因簽證拒簽，未成行
雷秀儀	Lawrence Hall of Science
翁靖華	Housing Rights Inc.
吳冬妮	East Bay Community Law Center

**2005年的選拔：**國際教育協會香港辦公室負責陳氏學者的選拔已經五年了。

**2005年陳氏學者預熱夏令營：**前陳氏學者為2005年的學者們舉辦了預熱夏令營。

## *W.T. Chan Fellows at UCLA and their internship sites:*



CLOCKWISE FROM TOP LEFT

**He Min (Hermia)**  
Lingnan (University) College,  
SYSU  
*Watts Labor and Community  
Action Center*

**Au Lai Wing (Ally)**  
Lingnan University  
*ArtsCorps*

**Wang Yingxin (Yuki)**  
Sun Yat-sen University  
*Center for Law in the Public  
Interest (CLPI)*

**Chan Wing (Sharon)**  
Lingnan University  
*Youth Opportunity Movement,  
Watts*

## Special Projects

**MBA Center Building Support.** Inspired by a generous donation from Mr. Joseph Lai of Hartland, WI, the Lingnan Foundation provided a grant to Lingnan (University) Development Fund, Limited, Hong Kong to support construction and maintenance costs for a new MBA Center at Lingnan (University) College, Sun Yat-sen University.

**Lingnan History.** A grant was provided to Sun Yat-sen University in partial support of the publication of the Red Buildings of Hong Lok. This handsome volume, by Professor Yu Zhi of SYSU's Engineering Department, is a tribute to the historic Lingnan buildings that are landmark structures still in use at Sun Yat-sen University.

## How to Apply: Proposal Guidelines

There are no application forms for proposals. Project possibilities usually are discussed informally with a staff member before a submission is made. The Foundation's Trustees consider project proposals each year in May. Please inquire directly about application deadlines.

Proposals are accepted only from non-profit educational institutions; grants are not made to individuals.



*Professor Kang Xiangui of SYSU's Computer Science Department and Professor Jun Luo of Mathematics visited the Lingnan Foundation and Yale University in April 2005, in connection with the Faculty Development Fund program. They met with Yale professors Edmund Yeh and Harrison Huibin Zhou during their visit.*

## Contributors

We are grateful to the following individuals for their support:

Joseph Lai  
Lilian Lee  
Peter and Linda Rohrbach  
Lawrence Siddall

We also recognize Paul Zeng Miao for his service as a volunteer. Interested friends can help by a gift to the Lingnan Foundation. Gifts of cash, pledges or letters of intent may be conveyed to:

### **Lingnan Foundation**

442 Temple Street  
New Haven, CT 06520-8340

PHONE 203 432-1063

FAX 203 432-7246

E-MAIL [Lingnan@yale.edu](mailto:Lingnan@yale.edu)

WEB [www.lingnanfoundation.org](http://www.lingnanfoundation.org)

Gifts, pledges and donations of appreciated property with ascertainable market value also are welcome, as are naming or memorial gifts (subject to the Trustees' acceptance). Information on gifts by charitable testament or trust is available on request.

Lingnan Foundation is a U.S. charitable (501(c) 3) corporation. Copies of our audited financial statements prepared by Pallman & Company are available on request.

## 特殊項目

**MBA 中心的修建：**受Joseph Lai先生資助的啓發，基金會為中山大學嶺南（大學）學院的MBA中心捐款，此款用於中心建築的維護與建設。

**嶺南歷史：**基金會撥款資助“康樂紅樓”一書的部分出版費用。該書由中山大學工學院院長余志編輯，描述了康樂園中迄今仍在使用的歷史性建築。

## 申請指南

基金會不備申請表格。申請者請在遞交申請信之前，先與基金會工作人員洽談項目資助的可能性。董事會每年一度於五月定期審批申請。

我們只接受非營利教育機構的申請，不會考慮向個人提供資助。



*Faculty participating in The University of Hong Kong/Sun Yat-sen University interdisciplinary American and Transnationalism teaching program. From left are professors Staci Ford, Gordon Slethaug, Gina Marchetti, Zhu Weibin and Wen Qiang.*

鳴謝：

2005 年度樂捐者：

Joseph Lai

Lillian Lee

Peter and Linda Rohrbach

Lawrence Siddall

感謝苗增先生為基金會義務服務。

有意樂助本會基金的朋友們請將款項或認捐信寄到：

**Lingnan Foundation**

**442 Temple Street**

**New Haven, CT 06520-8340**

我們樂意接受現金、支票、認捐以及恒產的捐贈。也歡迎付有特殊褒名紀念或其他條件的捐贈，但必須在得到董事會的同意後方能接受。有關捐款的問題，請隨時通知我們，我們將會盡力詳細為您解答。

嶺南基金會是一個在美國註冊的501-C-3慈善機構。我們備有派爾曼公司審核的財務報告書，函索即寄。



## Lingnan Foundation

442 Temple Street

P.O. Box 208340

New Haven, CT 06520-8340

PHONE 203 432-1063 FAX 203 432-7246

E MAIL [lingnan@yale.edu](mailto:lingnan@yale.edu)

WEB <http://www.lingnanfoundation.org>